



# Bright Projects

## Capability Statement

THINK CHANGE, THINK BRIGHT

A division of the



# About Bright Projects

## A Leading Multi-Disciplinary Project Delivery Partner.

Bright Projects, a division of Bright Group, is a trusted provider with a proven track record in delivering complex projects safely, efficiently, and on time. With deep expertise across all phases – from Early Contract Involvement (ECI), installation to commissioning – we provide end-to-end project solutions tailored to our clients' needs.

Our team of skilled engineers, construction managers, and technicians understands the unique challenges of operating environments and works collaboratively to minimise disruptions while maintaining productivity. We deliver practical and innovative solutions backed by hands-on industry experience. We proudly deliver projects across a diverse range of sectors, including resources, agriculture, government, and oil and gas – bringing tailored solutions and proven expertise to every environment.

Our ability to rapidly mobilise to remote or demanding locations ensures continuity and momentum from project commencement through to completion. With a strong focus on detail, we consistently uphold high standards of safety, workmanship, and reliability. Leveraging our national presence and a robust network of trusted local contractors, we integrate seamlessly into existing construction programs enhancing efficiency, value, and overall project success.

As a Bright Projects' client, you can expect ongoing support throughout the entire project lifecycle. We bring thought leadership, smart delivery strategies, and years of experience to drive meaningful outcomes and lasting value.

Bright Projects is a division of the







# About Bright Group



**Bright Group is a specialised provider of multidisciplinary trade services, delivering access and mechanical solutions for shutdowns, maintenance, and projects. We prioritise data-driven decisions, consistent and responsive execution, and the ongoing development of our people.**

At Bright Group, we've built a strong reputation as a well-established, reliable company committed to delivering top-notch services across a variety of industries. Since we started in 2007, we've grown from a small team focused on access services into a comprehensive, end-to-end service provider.

Today, we offer a wide range of services, including scaffolding, rope access, mechanical, electrical, design and training. What really sets us apart is our ability to handle scopes of work of any size or complexity while maintaining the highest standards of quality and safety. Our clients love working with us because we're not just about getting the job done – we're about getting it done right, every time.



## PROJECTS



Bright Projects is a dedicated division of Bright Group, delivering high-quality projects across multiple sectors. With our total solutions approach, we offer a multi-discipline service including structural mechanical and piping (SMP), electrical, instrumentation and control (EI&C), and access services. Our expertise focuses on end-to-end service delivery through implementation of project management, effective operational planning, task optimisation, and comprehensive project tracking and reporting.

---

## MAINTENANCE & SHUTDOWNS



Bright Maintenance and Shutdowns combines our trusted capabilities with a specialised focus on maintaining and sustaining critical assets. We provide a complete range of services — scaffolding, rope access, mechanical, and electrical — tailored to maintenance and shutdown execution. We ensure safe, efficient, and high-quality outcomes that keep our clients' operations running smoothly and reliably.

---

## TRAINING



Bright Training delivers high-quality, training at our Rivervale , W.A. facility. Our programs align with Best Practice Standards and WorkSafe guidelines. Open to both Bright Group and the public, we support anyone looking to upskill, get certified, or start a new career in a high demand industry.

---

## FIRST NATIONS



Bundara West is a proud First Nation Australian and Supply Nation Registered business, delivering reliable shutdown and maintenance services. In partnership with Bright Group, we focus on training, employment, and cultural connection—creating meaningful opportunities and supporting high-quality project delivery.

---

## LOCATIONS



With key locations in Perth, Newman, Onslow, and Orange (NSW), we bring the right people, equipment, and expertise to every job. We're committed to delivering work efficiently, professionally, and safely, no matter the scope or complexity. No matter the industry or challenge, we're ready to take it on with confidence.

# The Bright Projects Difference

## **End-to-End Service**

By offering complete project delivery services, we handle everything from Early Contractor Involvement (ECI) through to final commissioning and maintenance. This full-service approach reduces the need for multiple contractors and ensures a seamless experience from start to finish.

## **Expertise and Innovation**

Our experienced engineering team applies innovative solutions to each project, ensuring that we meet industry standards while providing value-added, cost-effective solutions.

## **Cost and Time Efficiency**

Our integrated approach to project delivery reduces the need for subcontractors, giving us greater control over timelines and budgets. This means we can deliver projects on time, within budget, and to the highest quality.

## **Quality and Safety**

Safety and quality are at the core of every project we undertake. We adhere to the highest safety standards and ensure that all work is completed in compliance with industry regulations. Our strong focus on quality ensures that we exceed client expectations and deliver durable, reliable results.

## **Collaboration and Communication**

We work closely with our clients throughout the project, providing regular updates, transparent reporting, and open communication across all levels to ensure that needs are met at every stage.

## **Our Commitment to Excellence**

Bright Group is committed to delivering high-quality, efficient, and cost-effective project solutions. With a focus on safety, innovation, and execution, we ensure that every project is delivered to the highest standard. Whether it's a Greenfields or Brownfields project, we have the expertise and resources to handle it.

By choosing Bright Group, you're partnering with a trusted project delivery expert who understands the importance of quality, safety, and efficiency in every aspect of construction and engineering.

Let us help you bring your project vision to life with confidence and reliability.





# Our Project Capabilities

**Bright Projects specialise in delivering comprehensive multi-disciplinary construction solutions tailored to meet client needs. We execute works including greenfield and brownfield projects in metropolitan, regional and remote locations.**

**With a proven track record of excellence, we offer expertise in:**

- Early Contractor involvement
- Project Management Services
- Constructability reviews
- Sustaining capital, plant upgrades & brownfield projects
- Multi Disciplined Projects
- Scheduling and Planning
- SMP Installations
- EI&C Installations
- Complete turnkey Scaffolding and Rope Access Solutions
- Fabrication and Installation
- Design Services

If you have a project in mind or want to discuss how Bright Projects can support your next venture, please contact us - we're ready to bring expertise, reliability, and tailored solutions to your doorstep.

✉ [enquiries@bright.com](mailto:enquiries@bright.com)

☎ 1800 273 448









# Our Team

**Backed by a team of experienced and trusted operational delivery specialists, we bring a depth of knowledge, reliability, and hands-on expertise to every project – ensuring consistent, high-quality outcomes across all areas of service.**



**Michael Douglas**  
COO/Project Director

With over 35 years of experience in the resource sector, Michael has held senior management roles with O'Donnell Griffin, Laing O'Rourke, Tempo Australia and G&S Engineering and successfully led complex, large-scale projects across the oil and gas, iron ore, and critical minerals industries, both in Australia and internationally. His combined background in trade and commercial operations equips him with the skills to navigate high-level negotiations, foster strong client relationships, and ensure the seamless delivery of projects from planning through to execution. Michael has extensive experience managing projects of all sizes, demonstrating a proven ability to lead multidisciplinary teams, drive operational efficiency, and deliver outcomes that meet both client expectations and industry standards.

## **Completed projects include:**

- RTIO Cape Lambert B phase A&B
- RTIO West Angelas Mine
- RTIO Yandi upgrade
- Cockburn Power Station
- Gorgan power Station and Balance of Plant
- RITO Balanced Machines
- Cape Lambert B and Parker point
- BHP Balance Machines South Flank and Yandi
- FMG Car Dumper
- FMG Solmon loadout and overland conveyors
- Collie Power Station Ash Plant
- RITO Mesa J civils NPI
- RITO Gudai Darri NPI and Airport
- BHP Port Hedland De-bottle Necking
- BHP South Yard
- BHP RAIL
- BHP Locomotive work shop
- Mobile Refinery upgrade Singapore
- Offshore Fabrication and Modulisation – Thailand, China and Indonesia



# Our Team



**Andrew Berry**  
Project Director

Andrew is a highly experienced Senior Operations/Project Manager with over 30 years in the heavy industrial sector including Senior Project Management/Operations roles at BHP, O'Donnell Griffin, Cimtec, Aerison and heads up the project delivery team for Breight. He has successfully delivered highly complex projects across Australia. Andrews primary focus is on ensuring the safe and timely execution of all project activities, strictly aligning them with the project scope of work, company standards, and ultimately satisfying the clients' expectations.

## Completed projects include:

- RTIO Western Turner Upgrade
- BHP KNR Upgrade
- Rio Tinto Amrun,
- RTIO Yurralyi Maya PowerStation
- TransAlta South Hedland PowerStation
- DMR Northlink. • Rio Tinto Argyle Mine Upgrade
- Newmont Cadia Mine Underground Upgrades
- Port Kembla Port Authority Stacker/Reclaimer Project
- CBH Albany Ship Loader Upgrades
- TransAlta Parkeston PowerStation
- MGI Koolan Island Mine

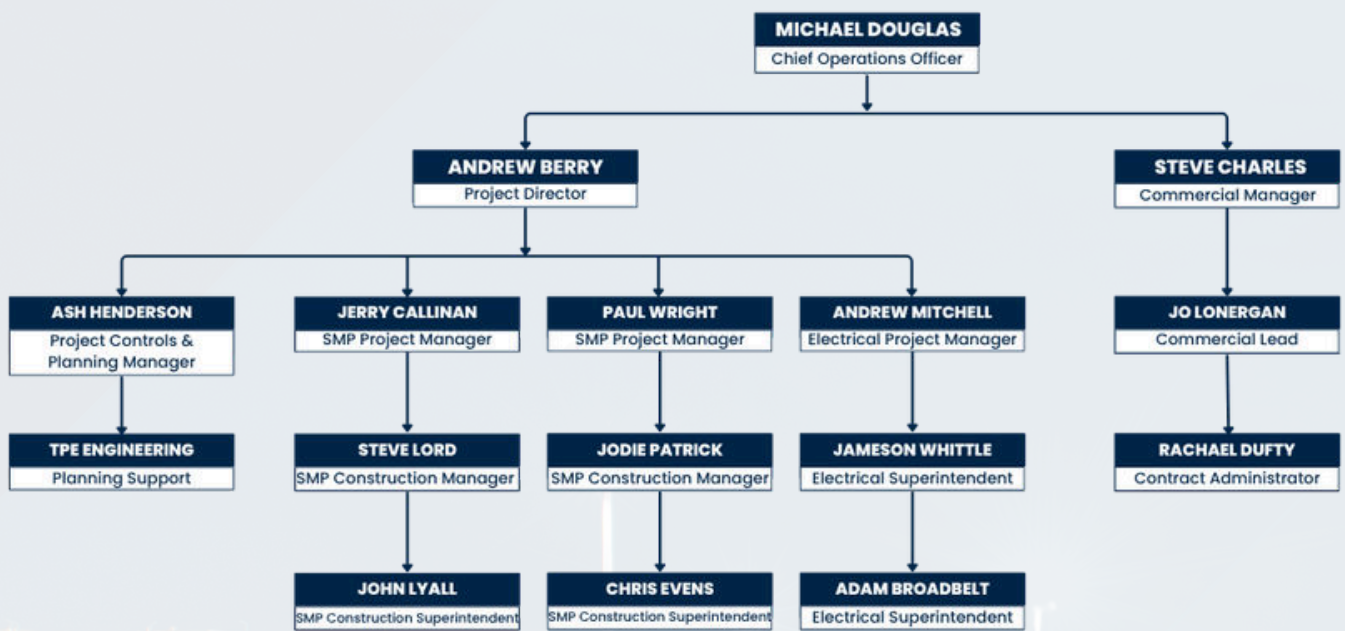




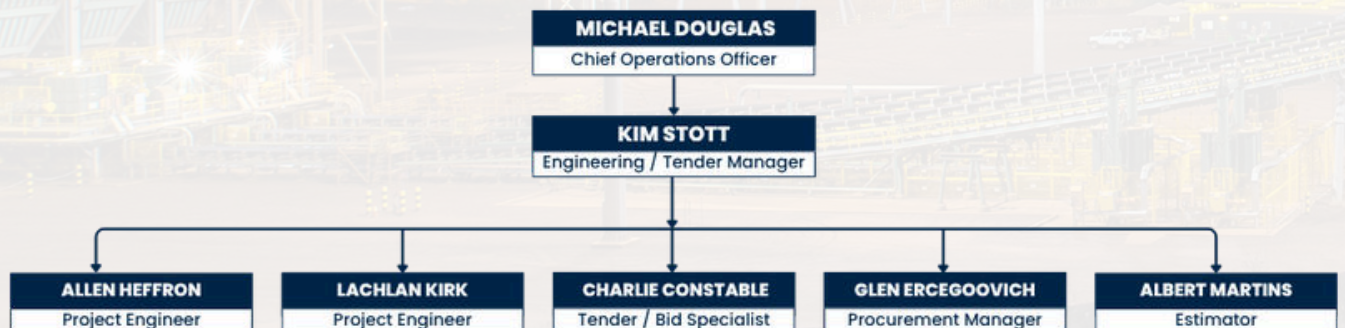
# Our Project Team

Backed by a team of experienced and trusted operational delivery specialists, we bring a depth of knowledge, reliability, and hands-on expertise to every project – ensuring consistent, high-quality outcomes across all areas of service.

## Project Delivery



## Engineering / Tendering









# Case Study

## HME Washdown Station Upgrade

### Overview

The Washdown Upgrade project improved the water treatment system and reconfigured operations to decommission the adjacent water containment pond. Water now circulates between the washpad, treatment system, and the existing 310kL tank.

### SMP Overview

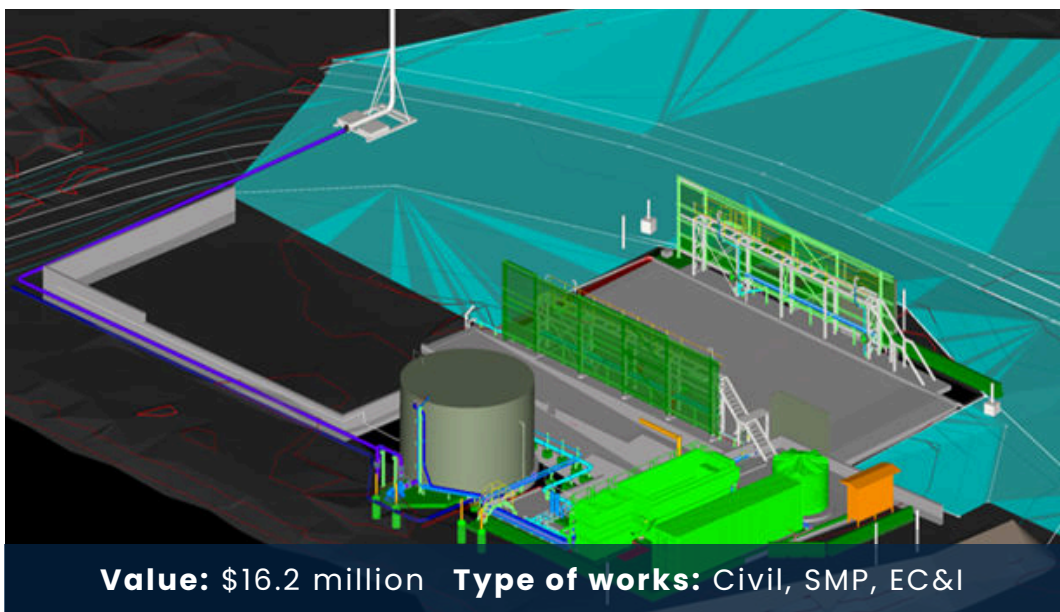
Scope included removing old treatment equipment, pumps, piping, and pond-related gear, and installing a new treatment system with vendor-supplied components, including a spray wall on both sides of the washpad.

### El&C Overview

Scope covered demolition of electrical systems tied to the old treatment setup, and installation of new electrical infrastructure for the updated system, including vendor equipment, pumps, piping, and valves.

### Civils Overview

Work involved removing and replacing concrete to accommodate new equipment, adding bollards and barriers, and repairing the washpad's entry and exit edges



**Value:** \$16.2 million **Type of works:** Civil, SMP, EC&I



# Case Study

## Coagulant Dosing Project

### Overview

Installation of a new coagulant storage and dosing system, including pumps, skids, piping, and full electrical, instrumentation, and commissioning support.

### SMP Overview

Scope included installing a coagulant storage tank, unloading pumps, and vendor-supplied dosing/dilution skids for each tailings thickener train. Piping connected the PW and RW networks to dosing skids, with separate lines to the Concentrate and Tailings Thickener Feed Boxes.

### EI&C Overview

Works covered supply and installation of electrical and instrumentation systems, including all materials, documentation, testing, commissioning, and required accessories.



**Value:** \$5.2 million    **Type of works:** SMP and EC&I

# Case Study

## OPF1 & OPF2 Classifier Removal

### Overview

Bright Project's EPC team completed full removal of redundant Classifiers (OPF1: 4 units, OPF2: 6 units) and associated components from FMG Desands Buildings.

### Scope Highlights

- Removal of classifiers, piping, tundishes, and electrical systems
- Temporary rail/skid system for material handling
- Top and bottom-level building clear-outs
- Engineering-led design and safety compliance

### SMP and E&I Overview

- **Engineering & Design:** Temporary rail/skid system and spatial gas modelling
- **Fabrication & Procurement:** Custom handrails, grating, and lifting equipment
- **Civils:** Scaffold access and gravity wash cleanup
- **Structural & Mechanical:** Rail/skid install, classifier removal via oxy cutting
- **Piping & Electrical:** Disconnection of piping, instrumentation, & control systems



**Value:** \$6.4 million    **Type of works:** SMP and EC&I



# Case Study

## HPGR DEX Baghouse Replacement

### Overview

Bright Projects was engaged to provide mechanical support, including labour, specialised tooling, transport, and mechanical kits for the full removal and replacement of filter bags, venturis, cages, blow tubes, and connector components. This work formed part of a broader SMP maintenance campaign focused on plant reliability and compliance.

### SMP Overview

- **Supply of qualified mechanical labour**, including supervisors and tradespersons experienced in baghouse maintenance
- **Provision of service vehicles and tooling**, ensuring full site mobility and compliance with mine-spec requirements
- **Supply and installation of mechanical kits**, including new filter bags, venturis, cages, blow tubes, and connectors
- **Safe removal and disposal** of all deteriorated components in accordance with environmental and site safety standards
- **Inspection and reporting** on the condition of internal baghouse components and structural elements



**Value:** \$1.8 million    **Type of works:** SMP



✉ [enquiries@bright.com](mailto:enquiries@bright.com)

☎ 1800 273 448

📍 Perth, W.A. | Newman, W.A. | Onslow, W.A. | Orange, N.S.W.